



SHEET METAL SOLUTION

WELCOME TO OUR SHIVA ENTERPRISES



We would like to introduce our self as Shiva Enterprises. Shiva Enterprises is Pioneer in manufacturing of Retail Racks and fixtures for various industries like Lifestyle, Electronics, Grocery, Supermarket & Hypermarket, and Industrial Components like Blower Canopy, Acoustic Hood, Belt Guard, Fabricated Sheet Metal Components.

Our focus is to provide end to end solutions to our valuable customers with the confidence that our products and services stands out in terms of feature, specifications, design and support.

Shiva Enterprises is a prominent Mild Steel Supplier based in Kundli Industrial Area, Sonapat Haryana, India, with a rich history spanning over 15 years. Established in 2017, our company has emerged as a trusted name in the laser cutting industry, renowned for delivering high quality Mild Steel products to clients across diverse sector

With a strong commitment to excellence, Shiva Enterprises has built a reputation for reliability, durability, and customer satisfaction. Our modern facility is equipped with cutting-edge technology and advanced machinery, enabling us to produce a wide range of Mild Steel products that adhere to industry standards and specifications.



ABOUT SHIVA ENTERPRISES

We Have Built an Enviably Reputation



Unique Jobwork

We offer best quality job works in cutting, bending, fabrication and powder coating of MS/SS/Al material at valuable price and best quality.



Latest Machinery

We have latest and best quality CNC laser cutting machines (1KW - 3 KW), CNC Bending machines (Hindustan Hydraulics), MIG, TIG, Argon welding machines and Powder Coating Plant.



Timely Delivery

We are doing our best to provide services timely to avoid any kind of delay.



The company has a competitive advantage in the manufacturing process by virtue of a huge manufacturing set up which employs over 50 people spread across an area of 30000 Sq feet.

With its precision in conceptualization and specialization in design & delivery, the success **Shiva Enterprises** can be attributed to the skills and determination of a dynamic team of designers and engineers.



www.shivaenterprises.online



OUR SERVICES

Perfect Solution for All Industries



CNC Cutting

We provide cutting services ranging from 0.2 mm to 20 mm metal with accuracy.



Bending

We provide bending services ranging from 0.2 mm to 10 mm metal with accuracy.



Powder Coating

We provide best quality powder coating services with life span of more than 20 years.



Fabrication

We offer fabrication services of MS and SS material with fine quality.



Cabinets/Pannels

We provide best quality pannels and cabinets used in electrical services.



3D Design & Development

We also provide best design for interior and exterior works.

OUR SERVICES

LASER CUTTING SERVICES | CNC BENDING SERVICES | CUSTOMIZED FABRICATION |
POWDER COATING SERVICES | RETAIL & DISPLAY SOLUTION





*"Success requires visions...
and a little bit of luck."*

OUR PRODUCTS



WIND TURBINE TECHNOLOGY
CONOPY



WIND TURBINE TECHNOLOGY
CONOPY



WIND TURBINE TECHNOLOGY
CONOPY



OUR PRODUCTS



WIND TURBINE TECHNOLOGY DISPLAY STAND

WIND TURBINE TECHNOLOGY DISPLAY STAND

OUR PRODUCTS



WIND TURBINE TECHNOLOGY
LASER CUTTING JALLI

OUR PRODUCTS

WIND TURBINE TECHNOLOGY CABINETS/PANNELS



KVSIO

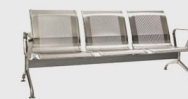
- Anti Peeping Glass
- Speakers
- 18" touch Monitor
- Cash Dispenser
- Receipt Printer
- Card Reader
- Cash Acceptor
- Encryption Pinpad
- RFID Card Reader

kvsio.en.alibaba.com



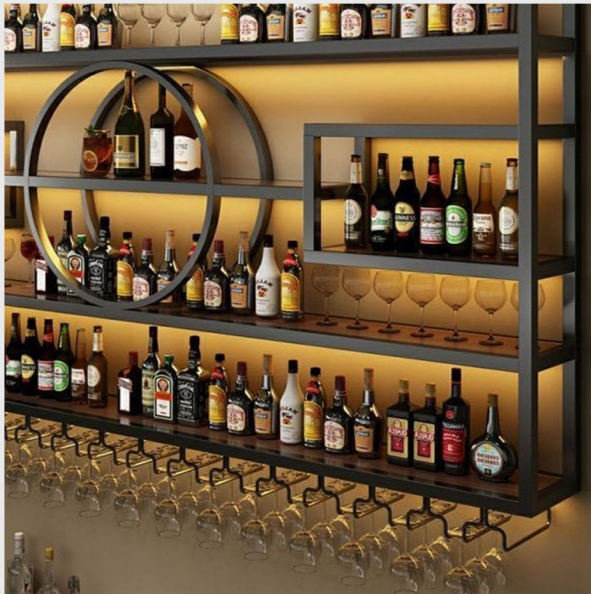
OUR PRODUCTS

WIND TURBINE TECHNOLOGY
CABINETS/PANNELS



OUR PRODUCTS

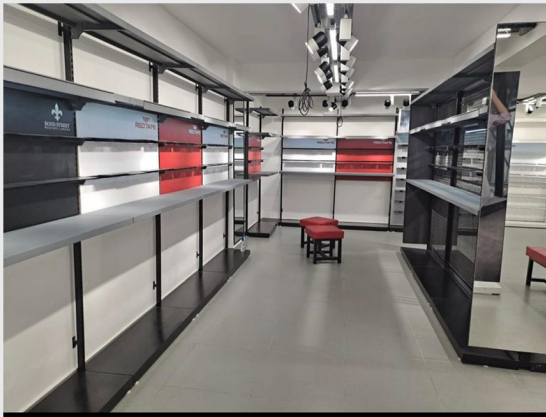
BEAR BAAR



HOTEL COUNTER



PANEL CUSTOMIZED



PANEL CUSTOMIZED



Mission and Vision

We create and build an environment of a strong international group.
We keep developing and using cutting edge technologies and work procedures.
We strive to be a strong and reliable partner in all areas of our business activities.





VISION

STRATEGIES

SUCCESS

OUR CLIENTS



THANKYOU





SHEET METAL SOLUTION

SHYAM SUNDER

CEO/ Founder

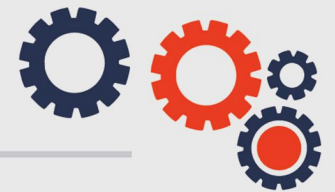
ANKIT

MANAGING DIRECTOR



+91 98138 42379

+91 70157 98525



+91 99913 10506

+91 70155 50668



shivalasercutting@gmail.com



www.shivaenterprises.online



Corporate Office:- Plot No:- 45,
Sector 56-Phase 4, HSIIDC,
Kundli Industrial Area, Sonipat Haryana 131028

